



Instruction: How to set up printers on Windows clients (XP/Vista)

Department IT // Last updated: 12/20/2011

Step 1: Extract and edit netz.bat

- Extract the file „netz.bat“ to your desktop.
- Right click > „Edit“
- Add your network username in line 3:
 - Example: set username=HHL.STUDENT
- File > Save
- Close „netz.bat“

Step 2: Run „netz.bat“ |

- Double click „netz.bat“
- Enter your HHL network password

```
Geben Sie das Kennwort für "hhl3\test" ein, um eine Verbindung zu "192.168.1.7" herzustellen:
```

- Note: The password will not be displayed on the screen!
- Connection to network successfully established:

```
Geben Sie das Kennwort für "hhl3\test" ein, um eine Verbindung zu "192.168.1.7" herzustellen:  
Der Befehl wurde erfolgreich ausgeführt.
```

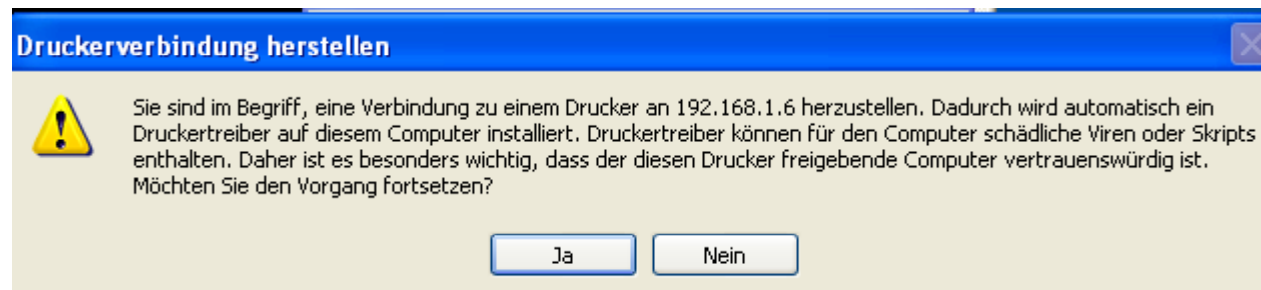
Step 2: Run „netz.bat“ |

- The following printers will be installed on your computer:
 - monochrome, color
- When you are running netz.bat for the first time you will be asked for username and password
 - Enter your HHL network username -> hhl3\username
 - Enter your HHL network password -> *****
 - Check „Save password“ -> confirm with OK



Step 2: Run „netz.bat“ |

- Confirm the upcoming question with „Yes“



- Repeat the last step for all printers (this necessary for the first time you run netz.bat).

Step 2: Run „netz.bat“ |

- Check the printer menu. You should see the printers after finishing the procedure successfully.