



How to setup printers in Windows 7

General remarks

- The following How To works with Windows 7 32 Bit and 64 Bit!
- Once you changed your network password you will have to reinstall all printers!

Step 1: Open „My Computer“

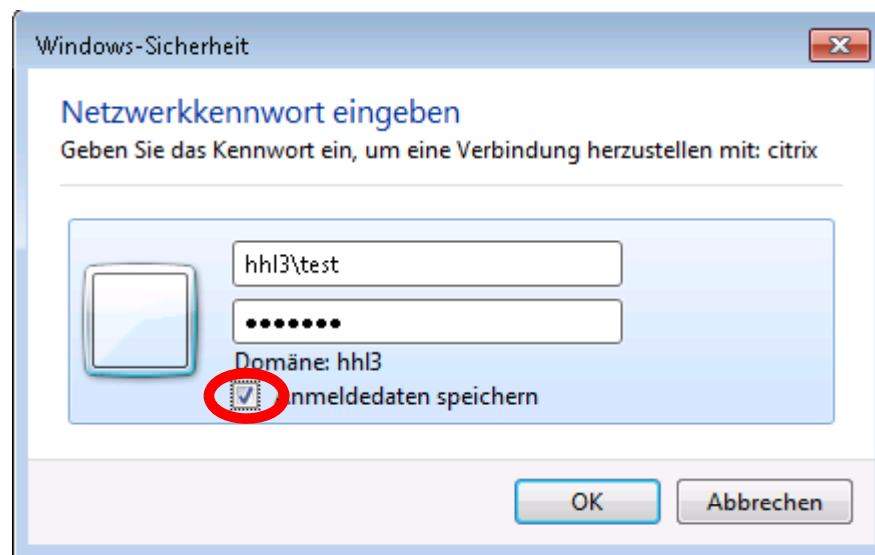


Step 2: Enter the printer path

- This path will always start with `\\hhl-print` followed by the printer name
 - Available printers are: **monochrome**, **color**
 - Example: `\\hhl-print\monochrome`
-

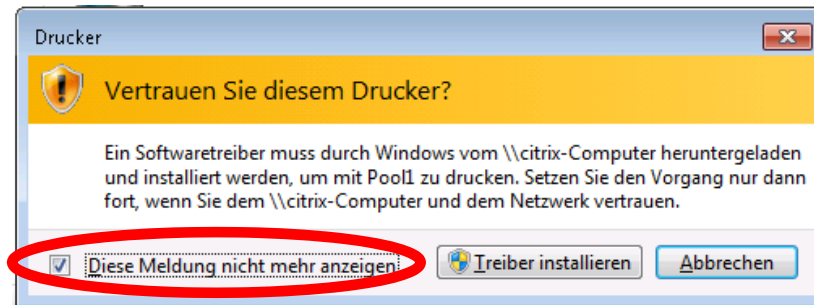
Step 3: Authentication – enter your login data

- Next you will be prompted to enter your username and your password for HHL -> Please choose Other Account.
- Enter your username using the syntax *hhl3\username*
- Enter your network password
- Save the data

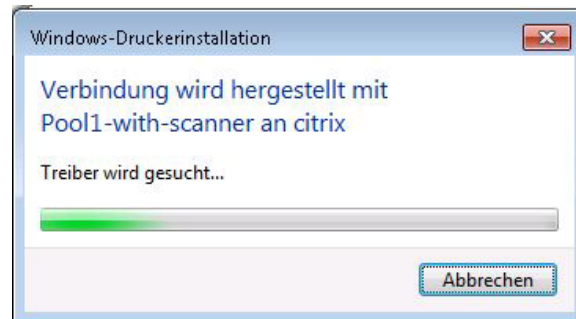


Step 4: Installation in progress...

- When you will be asked for installing the printer driver on your system confirm it.



- Now installation comes into its “final state“



Step 5: Printer ready for use

- You may now repeat steps 1 to 4 in order to install more of HHL's printers...