

PPTP-VPN- Connection - Windows XP

Short description:

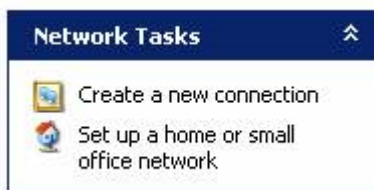
- With this kind of access (VPN), you can use the resources of the HHL via Wireless-LAN.

Requirements:

- You need a network account for the HHL-Network.
- You need Windows XP.
- It must be the latest service pack of Windows XP Professional installed!
- You must be connected to the HHL-Wireless-LAN.
- You need local administration rights on your notebook to configure the VPN-Connection.

Instructions

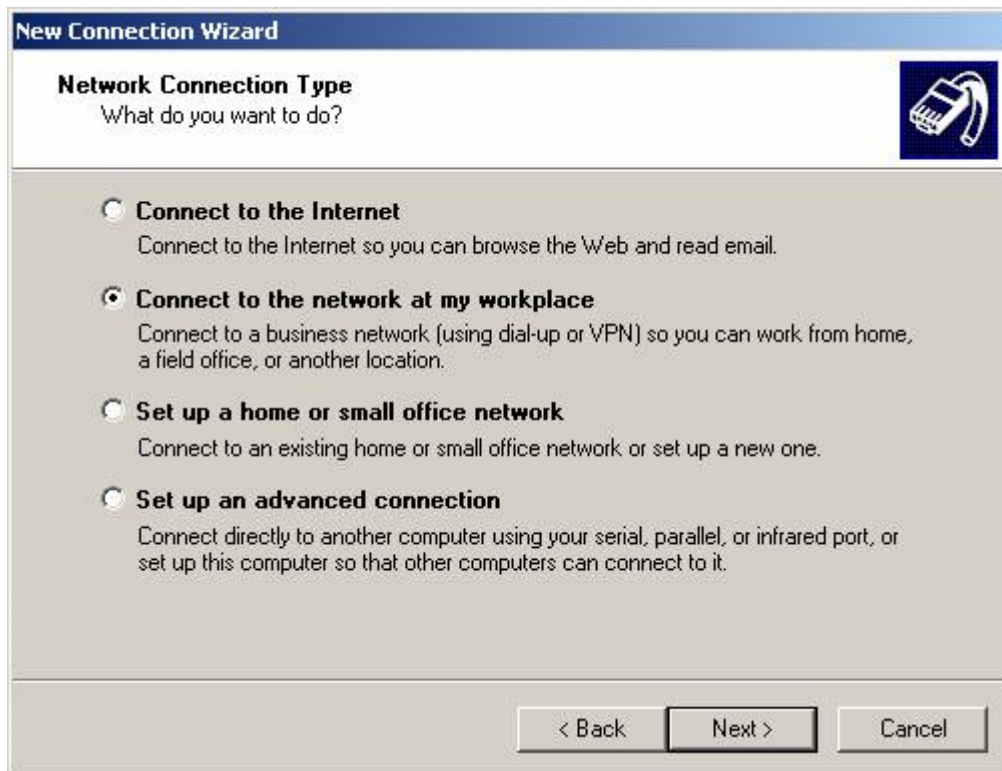
1. Click Start, and then click Control Panel.
2. In Control Panel, double click Network Connections



3. Click Create a new connection in the Network Tasks task pad



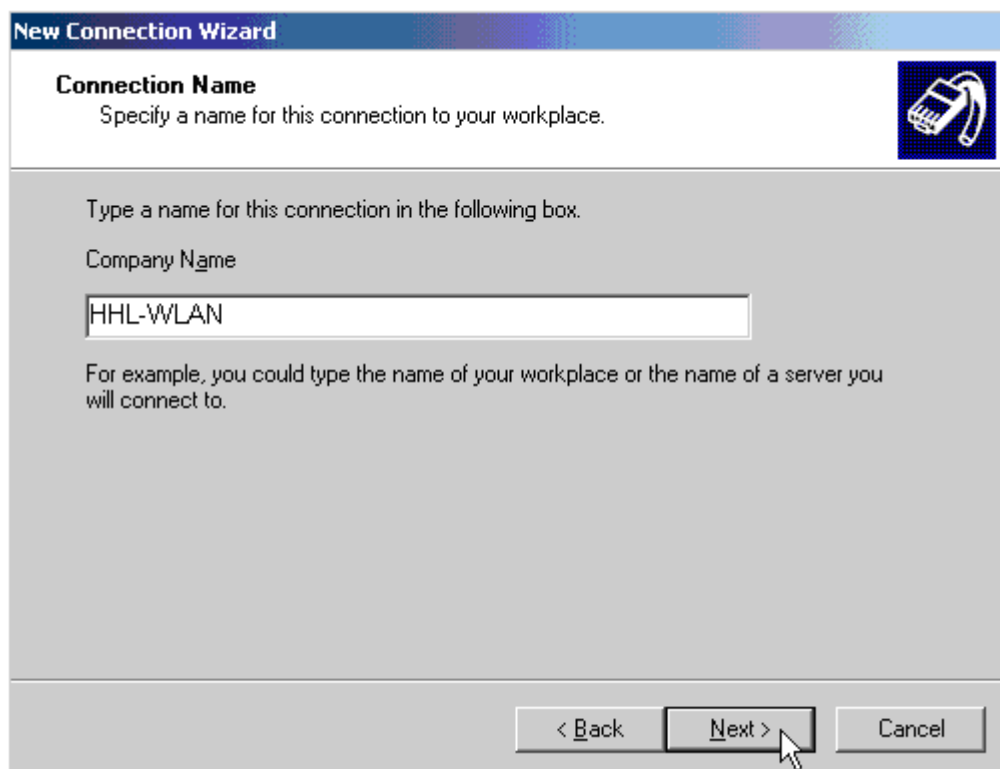
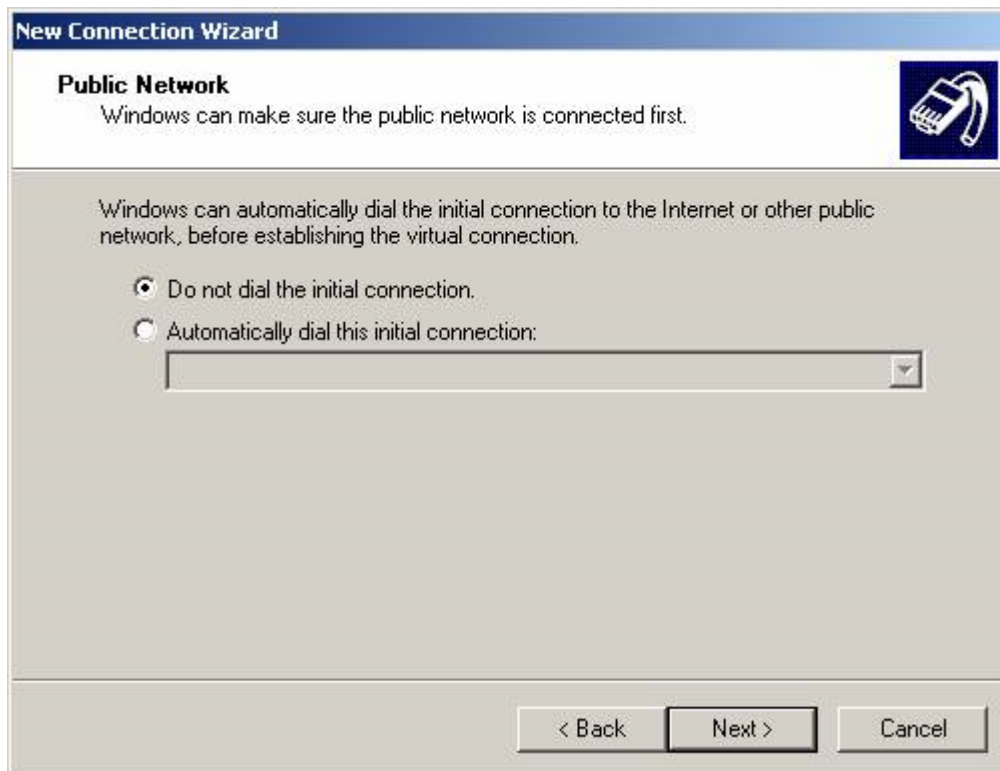
4. In the Network Connection Wizard, click Next.



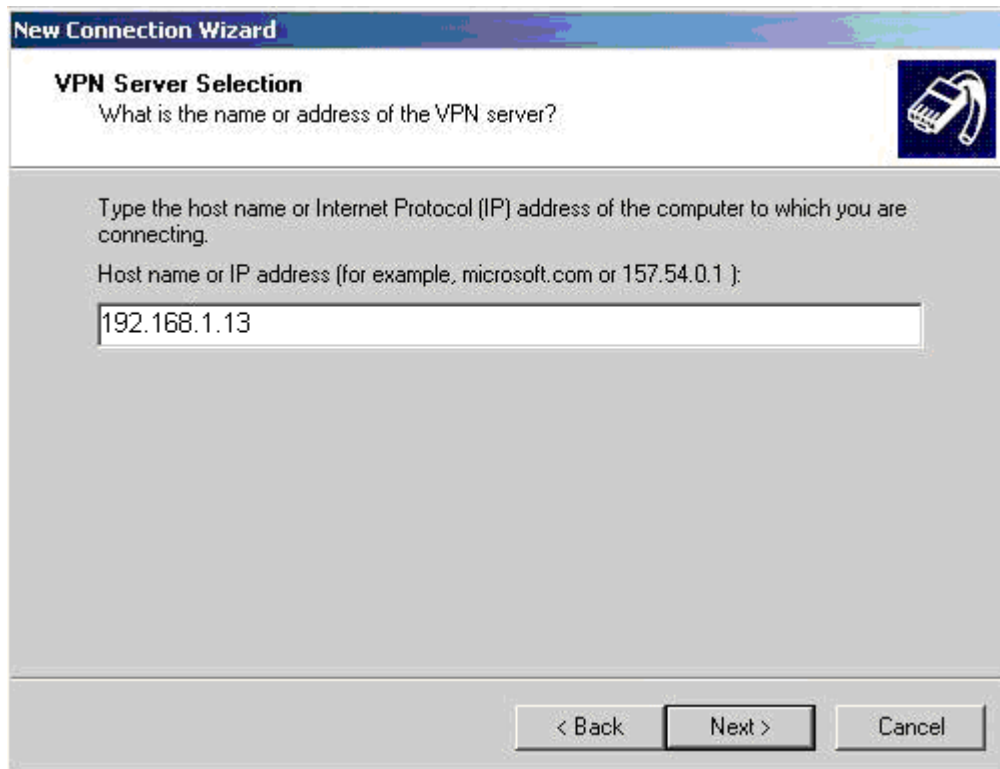
5. Click **Connect to the network at my workplace**, and then click **Next**.



6. Click **Virtual Private Network connection**, and then click **Next**.



7. Type the description "HHL-WLAN". Click Next.



8. Type the Internet Protocol (IP) address 192.168.1.13, and then click Next.



9. You may be asked if you want to use a Smart Card or not.

You are just about done, the rest of the screens just verify your connection, click Next.



Click to select the Add a shortcut to this connection to my desktop check box if you want one, if not, then leave it unchecked and click finish.

Connect



Type your user name and password, and then click Connect.